

Complete Product Interface From the Web

Gantt Chart Grouped by Resource



Arrange Data Any Way You Want

Information can be viewed by resource, by WBS, by phase, or by any other structure an organization could choose to use. Customized Gantt charts, selecting the data, the time frames and the presentation.

Schedule Activity View



User-Defined Bars

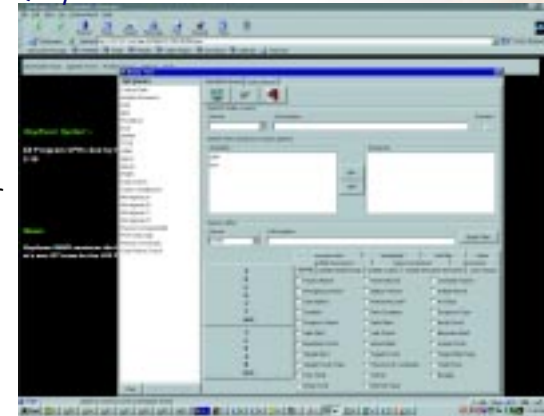


Simple Project Calendar Interface



Query Tool

Query Tool
With the Query Tool you can build standard alerts, attach filters to them and notify everyone in a work group when any of their activities fall within certain criteria.



Calendar Interface:

Calendars are easy to create and can be attached to resources, activities or relationships.

Based in San Diego, Rational Concepts serves the project management community with software and consulting services. Companies choose RC when they face mission-critical projects. RC's products are all Web-centered, platform-independent and focused on solving a project manager's most demanding tasks. The company's products include:

- Proj-Net Tools integrate all of the information about a project (costs, schedules, risks and action items) into a Web-based project office.
- Proposal-Net is the fastest, most comprehensive and effective way to prepare complex proposals.
- I-Cost is a Java-based cost management system for projects of any size or complexity.

All of RC's products and tools can share codes, structures,

resources and Web centers. Create something once and use it throughout the organization. For more information about any of RC's products or services, call our sales department at (760) 632-0444 or send e-mail to sales@rationalconcepts.com.

Visit Rational Concepts at www.rationalconcepts.com and sign up for an online demo.



3339 Avenida Obertura
Carlsbad, CA 92009
Tel: (760) 632-0444 – Fax: (760) 632-7284
www.rationalconcepts.com

© of Rational Concepts, Inc. 2000 All Rights Reserved

Java is a registered trademark of Sun Microsystems, Inc. Oracle is a registered trademark of Oracle Corporation. Netscape is a registered trademark of Netscape Communications Corporation. Microsoft is a registered trademark of Microsoft Corporation. All brand names and products are trademarks of their respective holders.

I-Schedule Delivers A Comprehensive Planning Environment

- ◆ Web-Centered
- ◆ Platform Independent
- ◆ Designed for Multiple Projects
- ◆ High-End Functionality at Moderate Prices
- ◆ Enterprise-Wide Resource Management
- ◆ Integrated Tools
- ◆ Resource Management at Skill Level



Not Just A Scheduling Tool

High-End Functionality

Where scheduling software was once solely concerned with activities, time, relationships and critical paths, today's companies and projects need more than a simple scheduling tool. They need resource management with unprecedented capabilities and flexibility. They need comprehensive project visibility that encourages participation by the entire project team. They need tools that can reach across projects, platforms, companies and geography. They need I-Schedule software.

I-Schedule delivers new levels of enterprise-wide collaboration and communication for projects, activities and resources. Designed from the ground up to serve multiple, interrelated projects, I-Schedule easily and elegantly links all of a company's projects. Projects can share resources, skill sets, calendars, web sites and activities. Once defined, codes, structures, work groups, user tables and views can be used by any project or user within an organization. Projects can be linked so that a change in one project's schedule, if it involves another project, changes the linked project and reports the impact on both. I-Schedule is ideal for working with distributed locations.

Extraordinary Resource Management

No other project scheduler offers resource management equal to I-Schedule's. Resource scheduling across projects is automatic. You can turn it on or off. You can build skill sets and attached them to individuals, assign them to resources and share them among projects. Skill scheduling provides a vital method for making the best use of an organization's collective skills and abilities. Skills can be attached to a resource. When an activity is planned and specific skills are requested, the tool locates individuals within the organization who possess the required skills and who have available time.

Skills and resources can be organized in a hierarchy. An unlimited number of codes and structures can be attached to activities and resources. Resources can be grouped and can be assigned rates for budgeting purposes.

Schedule in Daily or Micro Mode

I-Schedule can perform scheduling in a daily or micro mode. Typically, most projects use the standard method of scheduling in days. Micro-scheduling is used for such things as plant shutdowns where the schedule may need to be in minutes. When micro-scheduling is turned on, date fields become dates, plus hours and minutes.

Serves More than the Scheduler

Within any organization, there is a wide range of informational needs. Depending upon the focus and the area of responsibility, individuals and disciplines need to see different sets of information at different levels of detail. I-Schedule's customized views provide the ability to organize and view information in a way that best suits the need. Fields and criteria for any level of detail and graphics can be defined, saved and recalled. Customized information can be viewed, daily, weekly, monthly and can be posted to a Web center or automatically e-mailed.

Harness the Power of the Web

I-Schedule is truly a web-based product. It is written in Java and is completely platform independent. Its performance is maximized through the use of applets and servlets. Oracle serves as the back-end database, which completes the system's portability. I-Schedule can be accessible from anywhere in the world, using either Netscape Navigator or Internet Explorer. All of its functionality and features are available and can be accessed across the

Project Web Center



Web Center:

Integrated Web Tool creates user-defined Web centers for projects and work groups. All information in I-Schedule is easily posted to a project Web center.

Internet. The complete product interface is available, including all of its graphic functionality.

A Web Tool is included with I-Schedule. This tool automatically generates project Web centers that display all of the information relating to a project's schedules, resources and activities. Any information generated by I-Schedule can be posted to the Web center. User-defined Web centers invite project collaboration through project links to processes, drag-and-drop document sharing and user-defined tables.

Easy to Learn - Easy to Use

All of I-Schedule's tools have a common interface. Tables are the foundation of the entire system. Once a user is familiar with methods for manipulating the tables, he or she can apply that information throughout I-Schedule. Within any table type you can drag and drop column headers, add columns of information and save views. Tables created in other projects or by other users can be utilized for any project within the organization.

Categorize and Access any Information

An unlimited number of structures and codes can be used to examine, group and analyze project schedules. Every user or group of users can see information in the form that is most useful and easy to understand.

Any degree of detail from any level in any structure can be scrutinized. Reports are output to a spreadsheet object which can be saved in HTML or Excel file formats.

Query Tool - Automatic Status Report

Standard alerts can be constructed for a work group. You could, for example, attach a filter for late activities, defining as late all activities where the baseline date is less than the early finish date. A query can be put 'on automatic.' It could be set to automatically build reports/alerts and send e-mail messages to the group when an activity or activities are late. When the e-mail arrives, the user can double click on the report and click on a line item which opens the tool and provides the ability status activities.

Gantt Charts The Way You Want Them

In I-Schedule's Gantt charts Bars can be built to depict any date field in the system. You can attach filters to the bars. You could, for example, design a critical bar, select the bar aesthetics, select everything that is late and build a filter for critical path only. You could build another bar below with the same bar type, again, for everything that is late and filter for all activities that are not critical. Activities can be filtered to work groups. Each work group can be assigned a different color. You can overwrite bars when you are looking for the overflow or you can offset each bar by x pixels. Bars can be dragged, stretched, connected and can have relationships.

Working with Gantt charts, you can move columns around. Right click and bring up all the menus for a table. You can create resource histograms and view usage by activity, for entire project. Click on a histogram and move it up and down and see a change in values. If it goes above the 100% utilization line on histogram, the bar turns red.

I-Schedule can reorganize /group Gantt chart bars to follow any structure defined in I-Schedule – a WBS or by resources. You could ask to see all of an individual's task. Standard views are provided and beyond that, you can create totally customize any Gantt chart output to suit your information needs.

Web Center

- Project doc./report repository
- Drag and drop file sharing
- User-defined link

Critical Path Scheduler

- Analyze projects individually
- Analyze projects collectively
- Powerful critical path engine
- Schedule in Daily or Micro Mode

Multiple Projects

- Designed to manage multiple projects
- Share relationships, resources & skills
- Measure & manage cross project impact

Work Group Scheduling

- Support & security for work groups
- Work group alerts and messaging
- Work groups can have Web centers

Manage Resources and Skills

- Interactive resource histograms
- Adjust resource profiles by pool & by resource.

- Define & assign skills to resources
- Workers with comparable skill sets can be located & assigned.

Interactive Gantt Charts & Resource Views

- Drag & drop bars
- Customize columns of data, time spans & bar attributes.
- Customize and save views for resources activities & relationships
- Filters & user-defined project roll-ups

Risk & Action Item Support

- Track Risks
- Develop, assign & track risk mitigation plans
- Develop, assign & track action items
- Automated e-mail reminders

Multi-User

- Simultaneously status & edit project schedules

Integration

- Integrate project costs & management through I-Cost and Proj-Net
- Most powerful 'project office' in the industry

Unlimited Projects—Unlimited Resources, Structure and Codes—Unlimited Access

